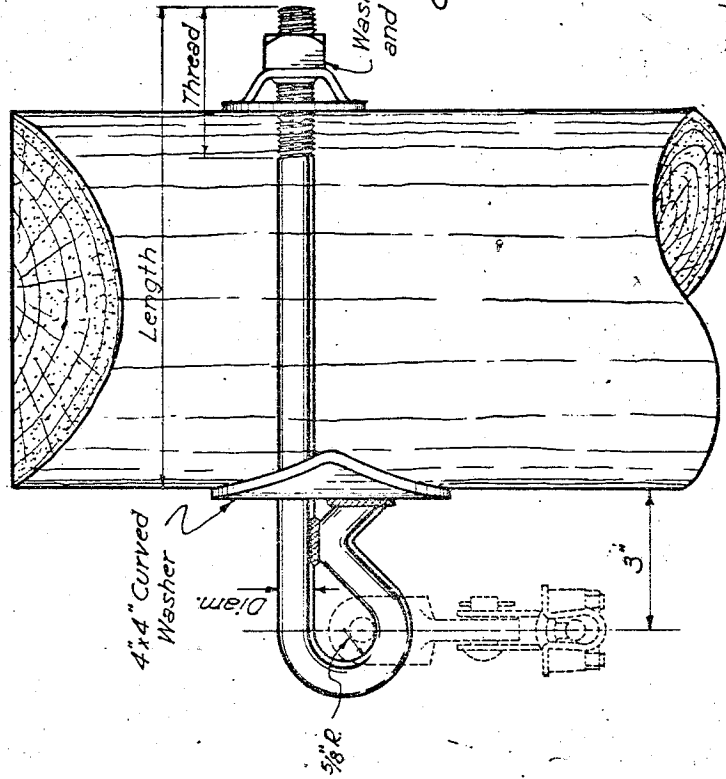
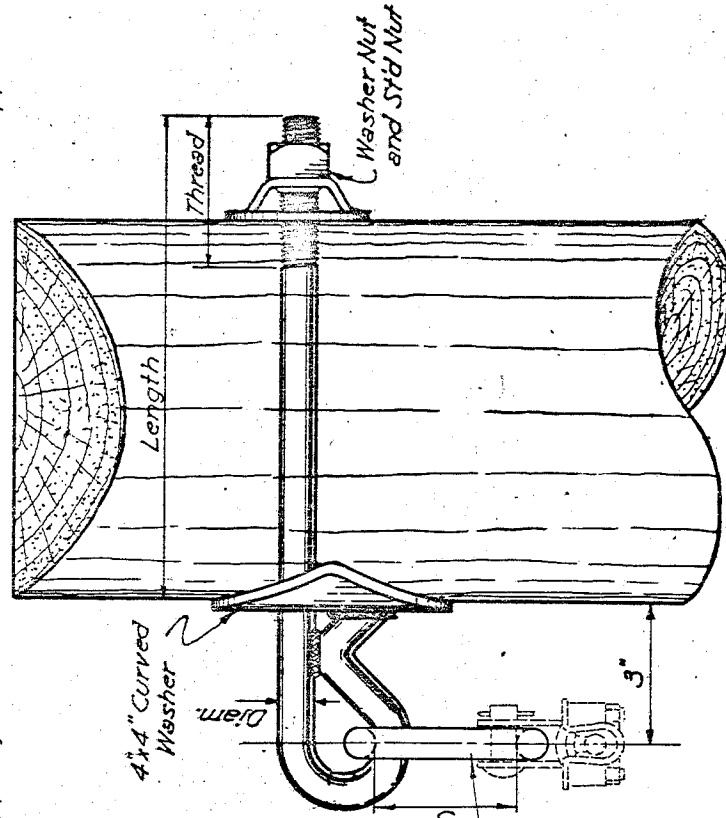


Stock Number		Without Chain Link	With Chain Link	Length Inches	Thread Inches	Diameter Inches
2812.5	2812.6		2812.5CL *	12	6	5/8
			2812.6CL *	14	7	3/4

*Unless otherwise specified 1/2" chain link furnished with 5/8" support, and 3/8" chain link furnished with 3/4" support.



WITHOUT CHAIN LINK



WITH CHAIN LINK

NO. 2812 STATIC WIRE SUPPORT

12-31-5800	1-4-20 RD.	4-4-45 LC	Date By	Revised

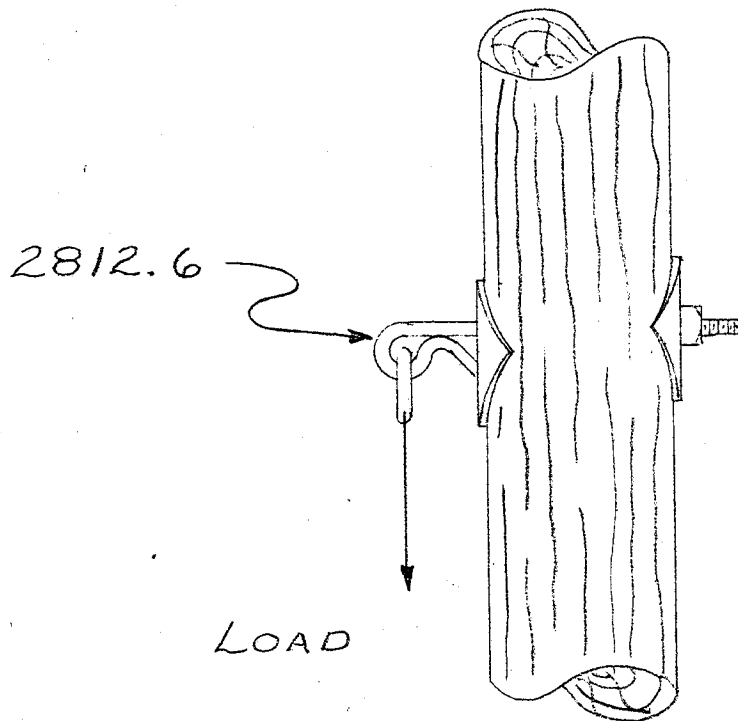
DRAWN
APPROVED
BY
R. P. Payne
H. L. Lammie
ARCH



HUGHES BROTHERS
SEWARD, NEBRASKA

DRG NO. 2812

DATE: 6-1-77



2812.6 SHIELD WIRE SUPPORT

LOAD	Pic. No.	REMARKS
0	1	
500	2	
1000	3	
1500	4	
2000	5	
2500	6	
3000	7	
3500	8	
4000	9	
4750	10	Testing ceased, maximum loading
0	11.	No severe damage or deformation

VERTICAL TEST

Drawn <i>Jirovsky</i>	HUGHES SEWARD WOOD METAL TRANSMISSION & DISTRIBUTION MATERIAL MILLS FOUNDED - 1921	BROTHERS NEBRASKA INCORPORATED	DRG. NO. <i>A-2144-C</i>
Appr.			
Appr.			



PHOTO No 1



PHOTO No. 2

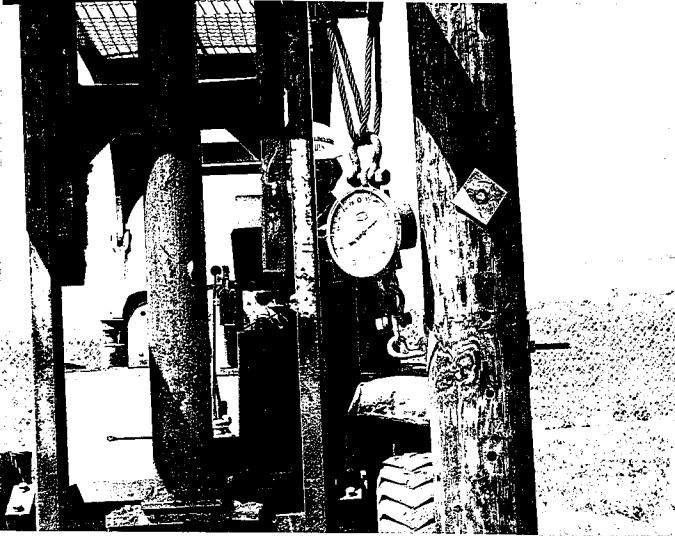


PHOTO No. 3

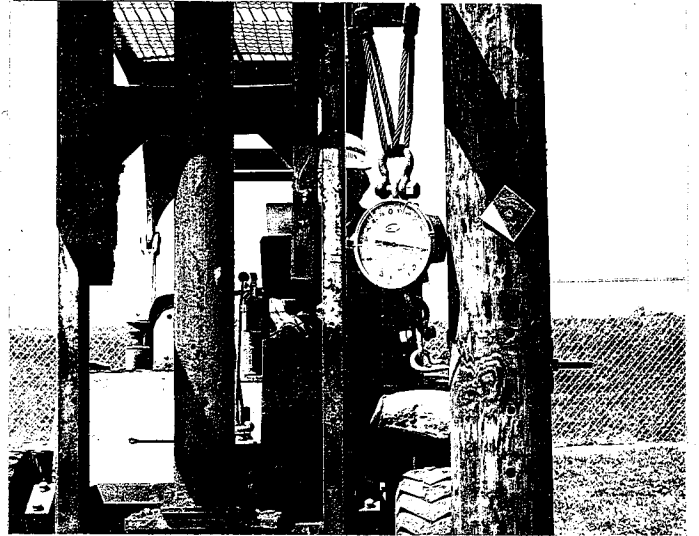


PHOTO No. 4



PHOTO No. 5

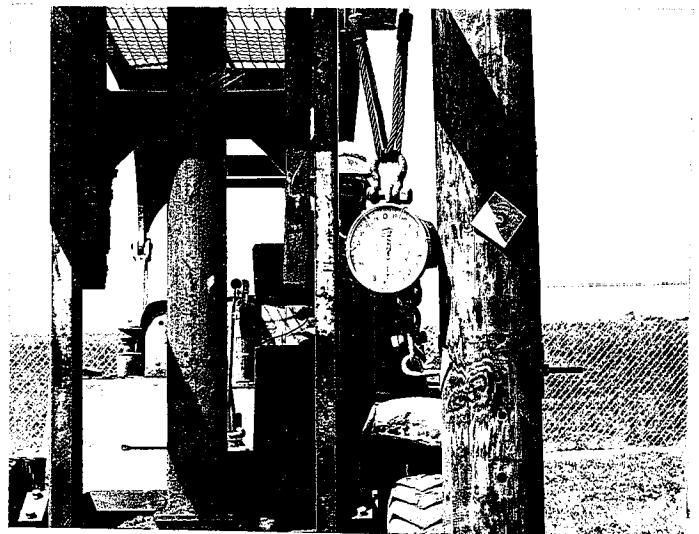
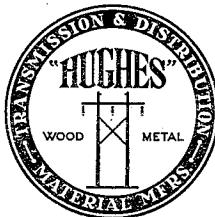


PHOTO No. 6

**HUGHES
SEWARD**

FOUNDED - 1921



**BROTHERS
NEBRASKA**

INCORPORATED

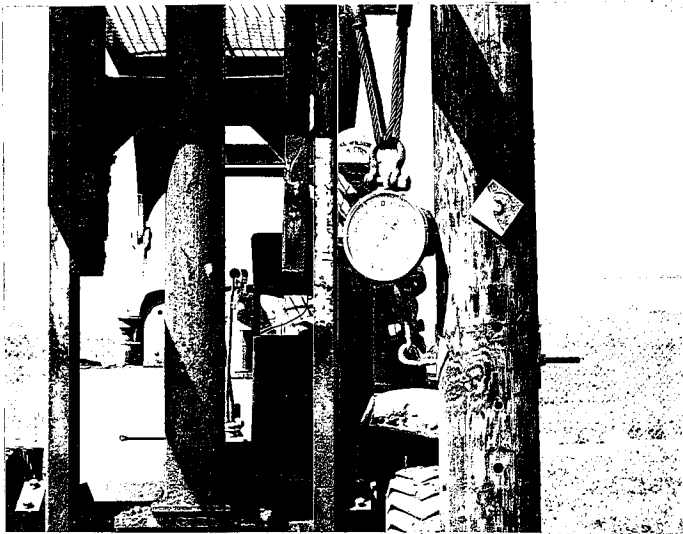


PHOTO No. 7

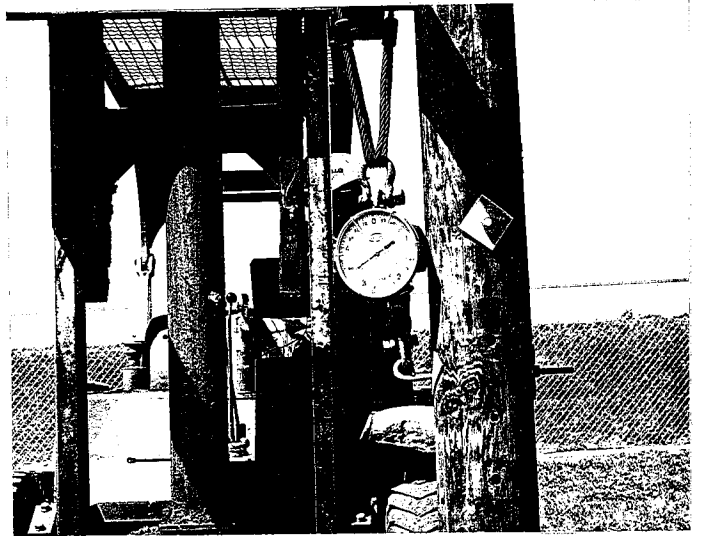


PHOTO No. 8

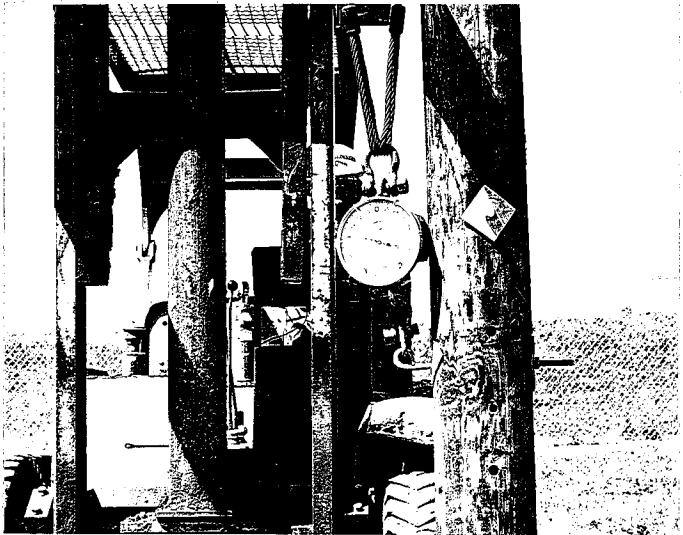


PHOTO No. 9

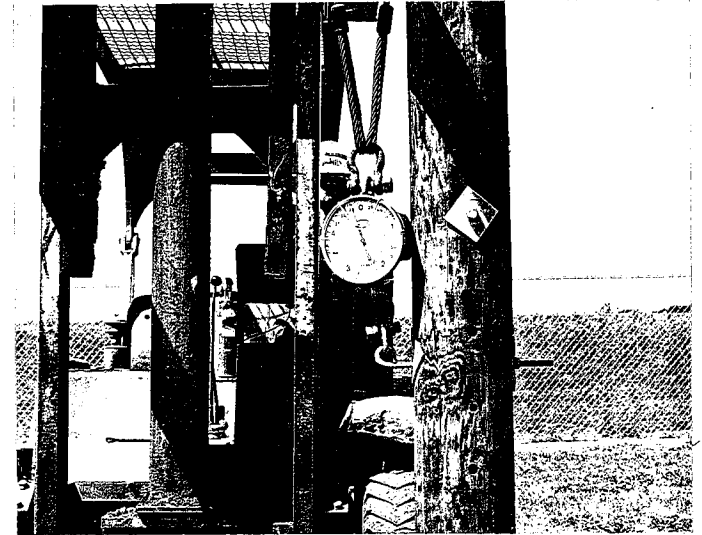


PHOTO No. 10



PHOTO No. 11

HUGHES
SEWARD

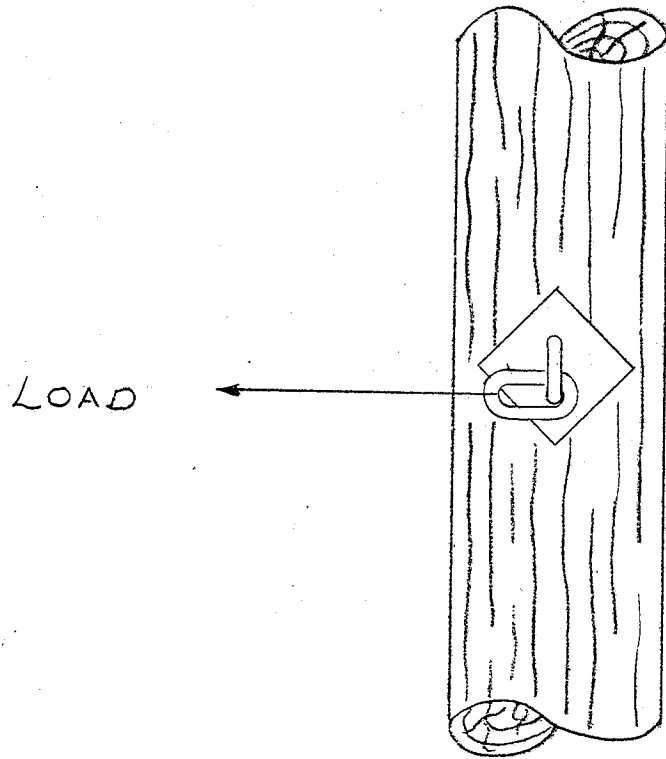
FOUNDED - 1921



BROTHERS
NEBRASKA

INCORPORATED

DATE: 6-1-77



2812.6 Shield
wire support

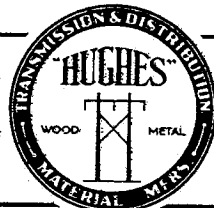
LOAD	Pic. No.	REMARKS
0	1	
500	2	
1000	3	1/2" deflection
1500	4	1 1/2" deflection, test discontinued

IN-LINE TEST

Drawn *Jrowsky*
Appr.
Appr.

HUGHES
SEWARD

FOUNDED - 1921



BROTHERS
NEBRASKA

INCORPORATED

DRG. NO.
A-2144-D

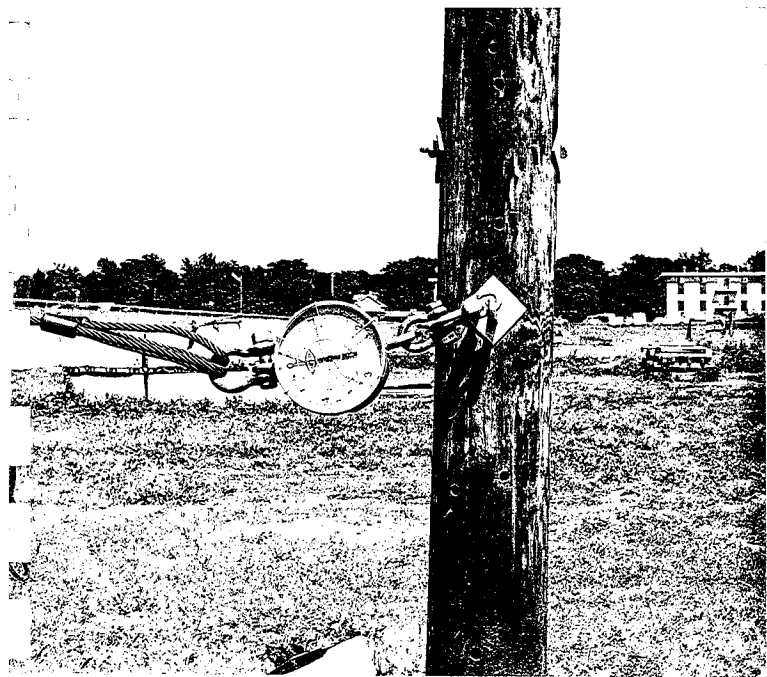


Photo No. 1

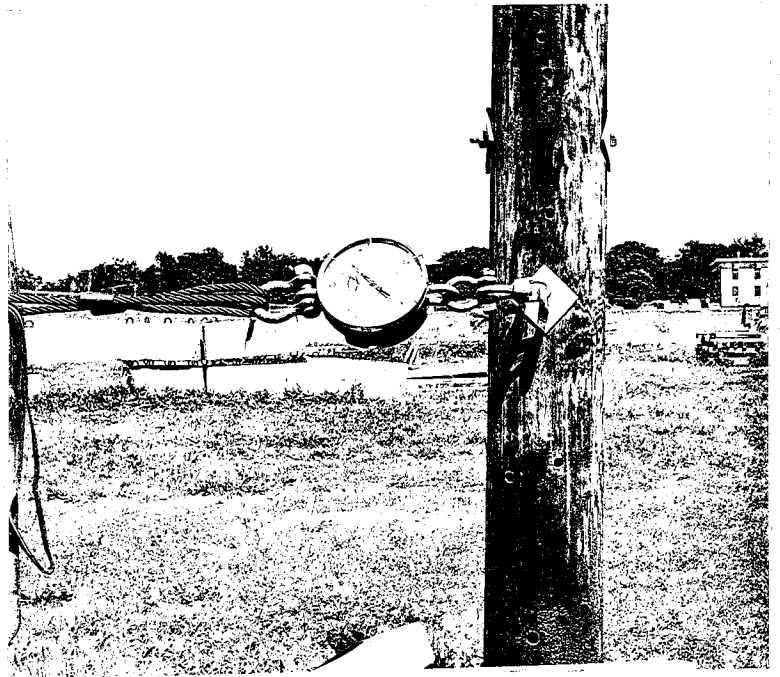


Photo No. 2

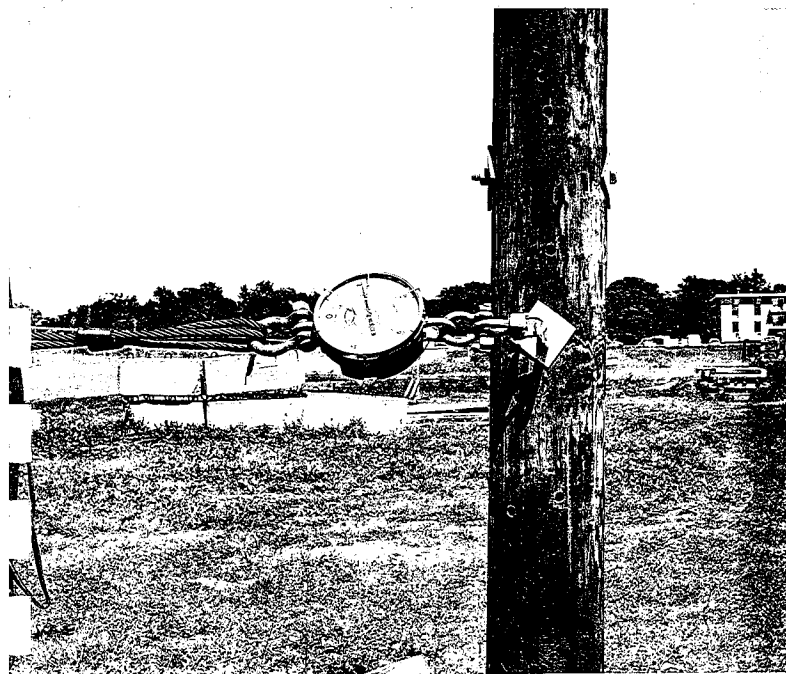


Photo No. 3

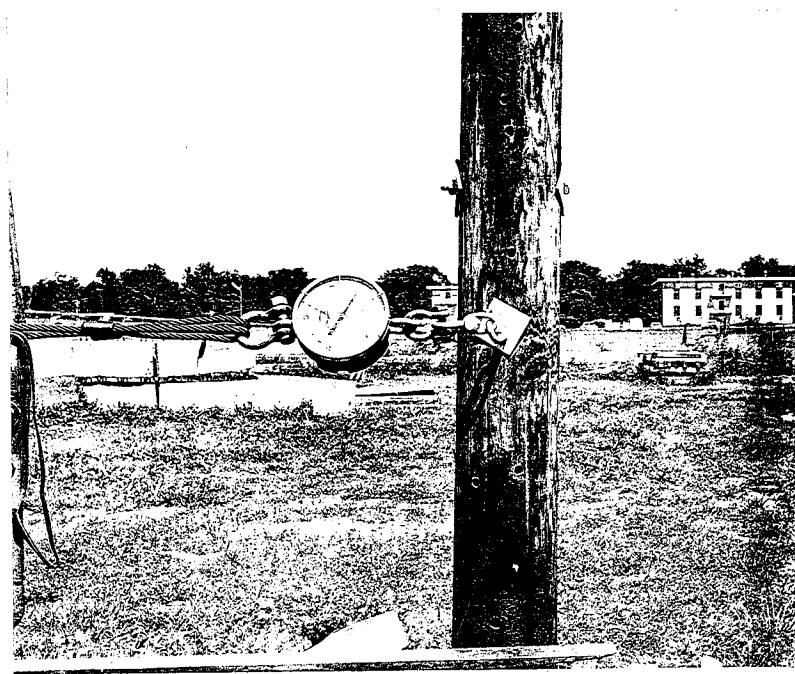


Photo No. 4

IN-LINE TEST

**HUGHES
SEWARD**

FOUNDED - 1921



**BROTHERS
NEBRASKA**

INCORPORATED